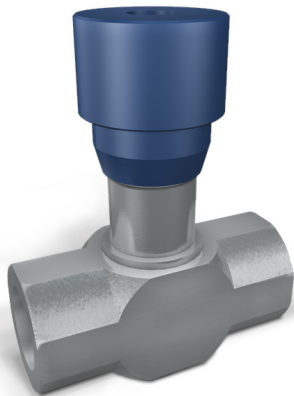


TYPE
VRFB 90°



90° FLOW REGULATOR VALVES

USE AND OPERATION:

This valve is used to adjust flow speed of actuators in both directions. As pressure compensation is not provided, flow adjustment depends on pressure and fluid viscosity. High adjustment sensitivity.

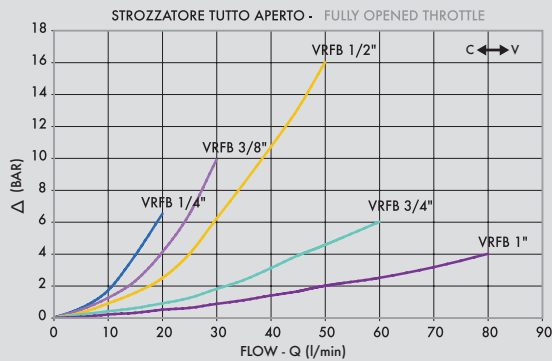
MATERIALS AND FEATURES:

Body: zinc-plated steel
Internal parts: hardened and ground steel
Seal: BUNA N standard
Tightness: needle type. Minor leakage with closed valve.

APPLICATIONS:

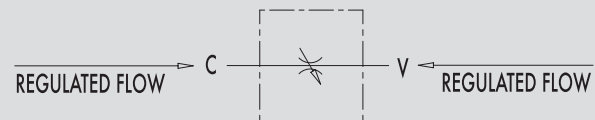
Connect a port to the pressure. Flow will be adjusted in the other one. When used on actuator with double pilot check valve, VRFB 90° has to be mounted between the actuator and the double pilot check valve. Flow adjustment is made by rotating the plastic hand knob after loosening the side locking screw. This particular configuration allows an accurate and sensitive adjustment.

DROPS CURVE



Oil temperature: 50° C - Oil viscosity: 30 cSt

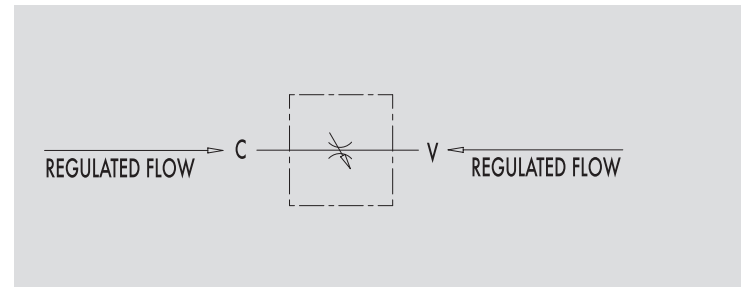
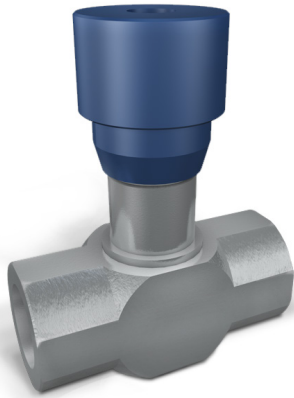
HYDRAULIC DIAGRAM



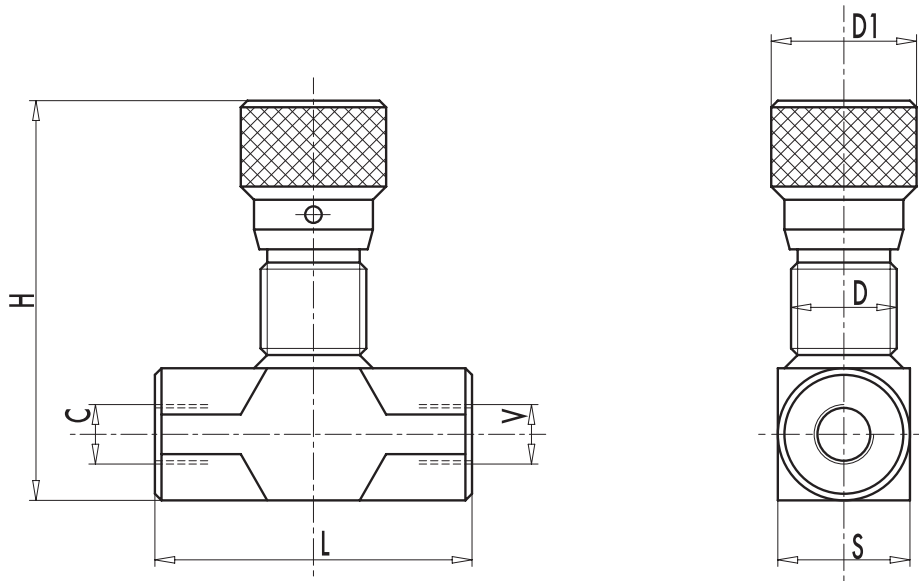
TYPE	MAX FLOW Lt. / min	MAX PRESSURE Bar
VRFB 90° 1/4"	15	350
VRFB 90° 3/8"	30	350
VRFB 90° 1/2"	50	350
VRFB 90° 3/4"	80	280
VRFB 90° 1"	110	250

TYPE
VRFB 90°

HYDRAULIC DIAGRAM



TYPE	MAX FLOW Lt. / min	MAX PRESSURE Bar
VRFB 90° 1/4"	15	350
VRFB 90° 3/8"	30	350
VRFB 90° 1/2"	50	350
VRFB 90° 3/4"	80	280
VRFB 90° 1"	110	250



TYPE	V - C GAS	L mm	D mm	D1 mm	H mm	S mm	WEIGHT kg
VRFB 90° 1/4"	G1/4"	60	M22X1,5	32	82	25	0,366
VRFB 90° 3/8"	G3/8"	61	M22X1,5	32	82	25	0,352
VRFB 90° 1/2"	G1/2"	70	M22X1,5	32	87	30	0,468
VRFB 90° 3/4"	G3/4"	89	M35X1,5	42	108,5	40	1,080
VRFB 90° 1"	G1"	90	M35X1,5	42	129	40	1,000